



Huntgrouparms International Arms & Security
Phone : +90 541 887 9143 - +90 554 350 9098
ÜZÜMLÜ / BEYŞEHİR / KONYA / TURKEY
www.huntgrouparms.com - info@huntgrouparms.com

ABOUT US



Established in 1992, **TARGET SHOTGUN COMPANY** is one of the most well known shotgun manufacturers in Turkey.

Having started to export activities in the year 2008, by **HUNT GROUP INTERNATIONAL ARMS&SECURITY COMPANY**, which aims to establish one of the biggest shotgun sales network in world.

We have been manufacturing and exporting variety kinds of firearms by combining high quality and modern technology.

We are producing and exporting semi automatic, pump action, single barrel, over and under, side by side, vertical magazine shotguns in different qualities and standarts, on the other hand we are able to supply air rifles, PCP and blank pistol to approximately 15 countries, where are European countries (have the **CIP Test Procedures and Steel Shot Certificate**), Middle East Countries, Asia and America.

"Our motto is providing our costumers high quality standarts with reasonable prices."

This principle is **HUNT GROUP INTERNATIONAL ARMS&SECURITY's** main philosophy and distinctiveness.



1
M13

7
SUPER-X

9
TYPHOON

11
TYPHOON KINETIC

13
QUEEN VERTICAL

15
QUEEN

19
TARGET SINGLE

21
QUEEN AIRGUNS

STEEL QUALITY CERTIFICATES OF OUR PRODUCTS



M13



Target & Walther M13 CLASSIC

Gauge : 12 - 20
Barrel Length : 47 - 50 - 55 - 61 - 66 - 71 - 76 - 81
Magazine Cap : 4+1 7+1
Choke : Mobile Choke - Slug
Stock : Walnut

Target & Walther M13 CLASSIC SYNTHETIC

Gauge : 12 - 20
Barrel Length : 47 - 50 - 55 - 61 - 66 - 71 - 76 - 81
Magazine Cap : 4+1 7+1
Choke : Mobile Choke - Slug
Stock : Synthetic

Target & Walther M13 CLASSIC COMBO

- *SPARE BARREL
- *MOBILE CHOKE SET
- *SPECIAL CASE

M13



Target & Walther M13 RED

Gauge : 12 - 20
Barrel Length : 47 - 50 - 55 - 61 - 65 - 71 - 76 - 81
Magazine Cap : 4+1 7+1
Choke : Mobile Choke - Slug
Stock : Walnut - Synthetic



Target & Walther M13 WHITE

Gauge : 12 - 20
Barrel Length : 47 - 50 - 55 - 61 - 65 - 71 - 76 - 81
Magazine Cap : 4+1 7+1
Choke : Mobile Choke - Slug
Stock : Walnut - Synthetic



Target & Walther M13 FULL WHITE

Gauge : 12 - 20
Barrel Length : 47 - 50 - 55 - 61 - 65 - 71 - 76 - 81
Magazine Cap : 4+1 7+1
Choke : Mobile Choke - Slug
Stock : Walnut - Synthetic



Target & Walther M13 Black D

Gauge : 12 - 20
Barrel Length : 47 - 50 - 55 - 61 - 65 - 71 - 76 - 81
Magazine Cap : 4+1 7+1
Choke : Mobile Choke - Slug
Stock : Walnut - Synthetic



Target & Walther M13 Figure

Gauge : 12 - 20
Barrel Length : 47 - 50 - 55 - 61 - 65 - 71 - 76 - 81
Magazine Cap : 4+1 7+1
Choke : Mobile Choke - Slug
Stock : Walnut - Synthetic



Target & Walther M13 Camouflage

Gauge : 12 - 20
Barrel Length : 47 - 50 - 55 - 61 - 65 - 71 - 76 - 81
Magazine Cap : 4+1 7+1
Choke : Mobile Choke - Slug
Stock : Walnut - Synthetic

M13



Target & Walther M13 M.A.T.

Gauge : 12
Barrel Length : 47 - 50 - 55 - 61
Magazine Cap : 4+1 7+1
Choke : Slug
Stock : Walnut - Synthetic



Target & Walther M13 SAFIR

Gauge : 12
Barrel Length : 47 - 50 - 55 - 61
Magazine Cap : 4+1 7+1
Choke : Slug
Stock : Synthetic



Target & Walther M13 FULL OPTIC

Gauge : 12
Barrel Length : 47 - 50 - 55 - 61
Magazine Cap : 4+1 7+1
Choke : Slug
Stock : Synthetic



Target & Walther M13 CLASSIC SYNTHETIC K

Gauge : 12 - 20
Barrel Length : 47 - 50 - 55 - 61 - 65 - 71 - 76 - 81
Magazine Cap : 4+1 7+1
Choke : Slug
Stock : Synthetic



Target & Walther M13 FULL OPTIC CAMOUFLAGE

Gauge : 12
Barrel Length : 47 - 50 - 55 - 61
Magazine Cap : 4+1 7+1
Choke : Slug
Stock : Synthetic



Foldable right & left stocks & Telescopic



Foldable right & left standart with telescopic



Foldable right and left telescopic stock with shock absorber



Telescopic Stocks

SUPER-X

Target & Waltham SUPER-X



Gauge : 12
Barrel Length : 47 - 50 - 55 - 61 - 66 - 71 - 76 - 81
Magazine Cap : 4+1 7+1
Choke : Mobile Choke - Slug
Stock : Walnut

Target & Waltham SUPER-X MARINE



Gauge : 12
Barrel Length : 47 - 50 - 55 - 61 - 66 - 71 - 76 - 81
Magazine Cap : 4+1 7+1
Choke : Mobile Choke - Slug
Stock : Synthetic

Target & Waltham SUPER-X WHITE



Gauge : 12
Barrel Length : 47 - 50 - 55 - 61 - 66 - 71 - 76 - 81
Magazine Cap : 4+1 7+1
Choke : Mobile Choke - Slug
Stock : Synthetic

Target & Waltham SUPER-X TACTICAL



Gauge : 12
Barrel Length : 47 - 50 - 55 - 61
Magazine Cap : 4+1 7+1
Choke : Slug
Stock : Synthetic

Target & Waltham SUPER-X SYNTHETIC



Gauge : 12
Barrel Length : 47 - 50 - 55 - 61 - 66 - 71 - 76 - 81
Magazine Cap : 4+1 7+1
Choke : Mobile Choke - Slug
Stock : Synthetic

Target & Waltham SUPER-X SYNTHETIC R



Gauge : 12
Barrel Length : 47 - 50 - 55 - 61 - 66 - 71 - 76 - 81
Magazine Cap : 4+1 7+1
Choke : Mobile Choke - Slug
Stock : Synthetic

TYPHOON



Target & Waltham TYPHOON G

Gauge : 12
Barrel Length : 47 - 50 - 55 - 61
Magazine Cap : 4+1
Choke : Slug
Stock : Synthetic



Target & Waltham TYPHOON M.A.T.

Gauge : 12
Barrel Length : 47 - 50 - 55 - 61
Magazine Cap : 4+1
Choke : Slug
Stock : Synthetic



Target & Waltham TYPHOON K

Gauge : 12
Barrel Length : 47 - 50 - 55 - 61
Magazine Cap : 4+1
Choke : Slug
Stock : Synthetic

Target & Waltham TYPHOON F-X TACTICAL



Gauge : 12
Barrel Length : 47 - 50 - 55 - 61
Magazine Cap : 4+1
Choke : Slug
Stock : Synthetic



Target & Waltham TYPHOON BOMB

Gauge : 12
Barrel Length : 47 - 50 - 55 - 61
Magazine Cap : 4+1
Choke : Slug
Stock : Synthetic



TYPHOON KINETIC



Target & Walther TYPHOON

Gauge : 12
Barrel Length : 55 - 61 - 66 - 71 - 76 - 81
Magazine Cap : 4+1
Choke : Mobile Choke - Slug
Stock : Walnut



Target & Walther TYPHOON

Gauge : 12
Barrel Length : 55 - 61 - 66 - 71 - 76 - 81
Magazine Cap : 4+1
Choke : Mobile Choke - Slug
Stock : Synthetic



Target & Walther TYPHOON 0G42

Gauge : 12
Barrel Length : 55 - 61 - 66 - 71 - 76 - 81
Magazine Cap : 4+1
Choke : Mobile Choke - Slug
Stock : Synthetic



SYSTEM

QUEEN VERTICAL



QUEEN SPECIAL VM-15

Gauge : 12
System : Gas Operated
Barrel Length : 51
Magazine Cap : 4+1 - 9+1
Choke : Slug
Stock : Tactical Synthetic





QUEEN ST-X1

Gauge : 12 - 20
 System : Extractor OR Ejector
 Receiver : Aluminum - Steel
 Barrel Length : 61 - 66 - 71 - 76
 Choke : Mobil Choke - Slug
 Stock : Walnut

QUEEN ST-X2



Gauge : 12 - 20 - 36
 System : Extractor OR Ejector
 Receiver : Aluminum - Steel
 Barrel Length : 61 - 66 - 71 - 76
 Choke : Mobil Choke - Slug
 Stock : Walnut

QUEEN ST-X4



Gauge : 12 - 20 - 36
 System : Extractor OR Ejector
 Receiver : Aluminum - Steel
 Barrel Length : 61 - 66 - 71 - 76
 Choke : Mobil Choke - Slug
 Stock : Walnut

QUEEN ST-X3



Gauge : 12 - 20 - 36
 System : Extractor OR Ejector
 Receiver : Aluminum - Steel
 Barrel Length : 61 - 66 - 71 - 76
 Choke : Mobil Choke - Slug
 Stock : Walnut



CROSSFIRE HE-1

Gauge : 12
System : Extractor OR Ejector
Receiver : Steel
Barrel Lenght : 61 - 66 - 71 - 76
Choke : Mobil Choke - Slug
Stock : Walnut



CROSSFIRE HE-2

Gauge : 12
System : Extractor OR Ejector
Receiver : Steel
Barrel Lenght : 61 - 66 - 71 - 76
Choke : Mobil Choke - Slug
Stock : Walnut



QUEEN S&S WHITE

Gauge : 12
Receiver : Steel
Barrel Lenght : 61 - 66 - 71 - 76
Choke : Mobil Choke - Slug
Stock : Walnut



QUEEN S&S BLACK

Gauge : 12
Receiver : Steel
Barrel Lenght : 61 - 66 - 71 - 76
Choke : Mobil Choke - Slug
Stock : Walnut

TARGET SINGLE

TARGET SINGLE ON1



Gauge : 12 - 16 - 20 - 36
Receiver : Steel
Barrel Length : 47 - 50 - 55 - 61 - 66 - 71 - 76
Choke : Mobil Choke - Slug
Stock : Walnut

TARGET SINGLE ON2



Gauge : 12 - 16 - 20 - 36
Receiver : Steel
Barrel Length : 47 - 50 - 55 - 61 - 66 - 71 - 76
Choke : Mobil Choke - Slug
Stock : Synthetic

TARGET SINGLE HT



Gauge : 12 - 16 - 20 - 36
Receiver : Steel
Barrel Length : 47 - 50 - 55 - 61 - 66 - 71 - 76
Choke : Mobil Choke - Slug
Stock : Synthetic

TARGET SINGLE GP12



Gauge : 12 - 16 - 20 - 36
Receiver : Steel
Barrel Length : 47 - 50 - 55 - 61 - 66 - 71 - 76
Choke : Mobil Choke - Slug
Stock : Walnut

TARGET SINGLE GP36



Gauge : 12 - 16 - 20 - 36
Receiver : Steel
Barrel Length : 47 - 50 - 55 - 61 - 66 - 71 - 76
Choke : Mobil Choke - Slug
Stock : Synthetic

TARGET SINGLE GP9



Gauge : 12 - 16 - 20 - 36
Receiver : Steel
Barrel Length : 47 - 50 - 55 - 61 - 66 - 71 - 76
Choke : Mobil Choke - Slug
Stock : Synthetic

QUEEN AIRGUNS

QUEEN PCP AIRRIFLE



QUEEN AI-555A, WALNUT STOCK



System : Barrel Break
 GA : 4,5 - 5,5
 Stock : Walnut
 Sight : Truglo Fiber Optic (Adjustable)
 Barrel Length : 455mm
 Velocity : 175 - 340 m/s

QUEEN AI-155A, BARREL BREAK WOOD



System : Lever Break
 GA : 4,5 - 5,5
 Stock : Walnut
 Sight : Truglo Fiber Optic (Adjustable)
 Barrel Length : 455mm
 Velocity : 175 - 340 m/s

QUEEN PCP AIRRIFLE FEATURES

CALIBRE	MAX. MUZZLE VELOCITY	MAGAZINE CAPACITY	AIR TUBE VOLUME	FILL PRESSURE	SHOTS PER FILL	STOCK
4.5mm / .177cal	360 m/s (1180 fps)	14 pcs.	255 cc	200 BAR	120 pcs.	High Quality Turkish Walnut
5.5 mm / .22 cal	310 m/s (1010 fps)	12 pcs.	255 cc	200 BAR	120 pcs.	High Quality Turkish Walnut

QUEEN AI-255S, LEVER BREAK, SYNTHETIC



System : Lever Break
GA : 4,5 - 5,5
Stock : Synthetic
Sight : Truglo Fiber Optic (Adjustable)
Barrel Length : 455mm
Velocity : 175-340 m/s

QUEEN ARBOREAL



System : Lever Break
GA : 4,5 - 5,5
Stock : Walnut
Sight : Truglo Fiber Optic (Adjustable)
Barrel Length : 455mm
Velocity : 175-340 m/s

QUEEN AI-145S, BARREL BREAK, SYNTHETIC



System : Barrel Break
GA : 4,5 - 5,5
Stock : Synthetic
Sight : Truglo Fiber Optic (Adjustable)
Barrel Length : 455mm
Velocity : 175-340 m/s

QUEEN AI-555S



System : Barrel Break
GA : 4,5 - 5,5
Stock : Synthetic
Sight : Truglo Fiber Optic (Adjustable)
Barrel Length : 455mm
Velocity : 175-340 m/s

QUEEN OBSESION MOSSY OAK



System : Lever
GA : 4,5 - 5,5
Stock : Camouflage
Sight : Truglo Fiber Optic (Adjustable)
Barrel Length : 455mm
Velocity : 175-340 m/s

QUEEN NEXT VISTA



System : Barrel Break
GA : 4,5 - 5,5
Stock : Camouflage
Sight : Truglo Fiber Optic (Adjustable)
Barrel Length : 455mm
Velocity : 175-340 m/s

QUEEN DUCK BLIND MOSSY OAK



System : Barrel Break
GA : 4,5 - 5,5
Stock : Camouflage
Sight : Truglo Fiber Optic (Adjustable)
Barrel Length : 455mm
Velocity : 175-340 m/s

QUEEN CARBON FIBER



System : Barrel Break
GA : 4,5 - 5,5
Stock : Camouflage
Sight : Truglo Fiber Optic (Adjustable)
Barrel Length : 455mm
Velocity : 175-340 m/s

QUEEN AI-465C, 6.35mm CAMO CARBON FIBER



System : Barrel Break
GA : 4,5 - 5,5 - 6,35
Stock : Tactical Camouflage
Sight : Truglo Fiber Optic (Adjustable)
Barrel Length : 455mm
Velocity : 300 - 360 m/s

QUEEN AI-455S, UNIQUE FRONT SIGHT



System : Barrel Break
GA : 4,5 - 5,5 - 6,35
Stock : Tactical Camouflage
Sight : Truglo Fiber Optic (Adjustable)
Barrel Length : 500mm
Velocity : 300 - 360 m/s

QUEEN AI-455S, BLADE FRONT SIGHT



System : Barrel Break
GA : 4,5 - 5,5 - 6,35
Stock : Synthetic
Sight : Truglo Fiber Optic (Adjustable)
Barrel Length : 500mm
Velocity : 300 - 360 m/s

QUEEN AI-655S



System : Barrel Break
GA : 4,5 - 5,5
Stock : Synthetic
Sight : Truglo Fiber Optic (Adjustable)
Barrel Length : 455mm
Velocity : 175 - 325 m/s

QUEEN AI-755S, SILENCER



System : Barrel Break
GA : 4,5 - 5,5
Stock : Synthetic Tactical
Sight : Truglo Fiber Optic (Adjustable)
Barrel Length : 455mm
Velocity : 175 - 325 m/s

QUEEN AI-845S



System : Barrel Break
GA : 4,5 - 5,5
Stock : Synthetic Tactical
Sight : Truglo Fiber Optic (Adjustable)
Barrel Length : 455mm
Velocity : 175 - 325 m/s

QUEEN AI-955S



System : Barrel Break
GA : 4,5 - 5,5
Stock : Synthetic Tactical
Sight : Truglo Fiber Optic (Adjustable)
Barrel Length : 455mm
Velocity : 175 - 325 m/s

QUEEN AI-1045S



System : Barrel Break
GA : 4,5 - 5,5
Stock : Adjustable Synthetic
Sight : Truglo Fiber Optic (Adjustable)
Barrel Length : 455mm
Velocity : 175 - 325 m/s



HUNT GROUP CF BLACK

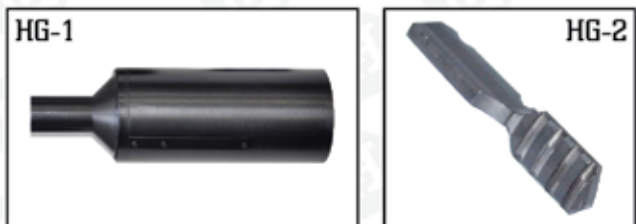
Kalibre Caliber	Maksimum Namlu çıkış hızı Muzzle velocity	Kuyruk Classlock	Yatış uzunluğu Barrel length		Ağırlık Weight
			Yatış uzunluğu Barrel length	Yatış uzunluğu Barrel length	
4,5 mm / .177 cal.	230 m/s (750 fps)	Yükseklik ayarlı yapılabilir kuyruk Height adjustable check plastic gunstock	1130 mm (44,8")	400 mm (15,7")	3,0 kg (6,6 lbs)
5,5 mm / .22 cal.	185 m/s (600 fps)				
6,30 mm / .25 cal.	160 m/s (500 fps)				

özellikler / specifications



HUNT GROUP CF CAMO

PARTS & ACCESSORIES



HG-1

HG-2



HG-3

HG-4

HG-5

HG-6

HG-7

HG-8

HG-9

HG-10

HG-11

HG-12

HG-13

HG-14

HG-15

HG-16

HG-17

HG-18

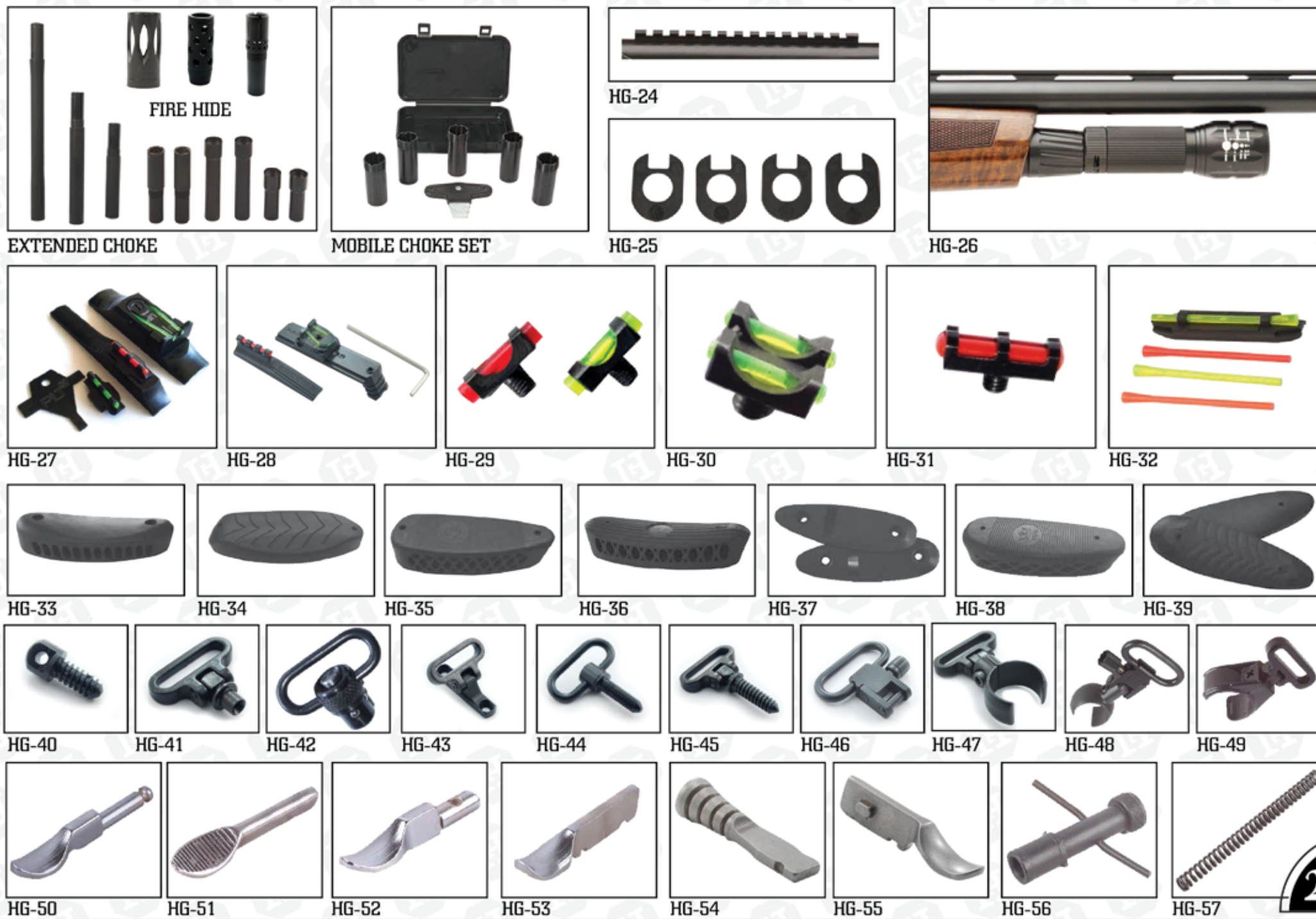
HG-19

HG-20

HG-21

HG-22

HG-23



FIRE HIDE

EXTENDED CHOKE

MOBILE CHOKE SET

HG-24

HG-25

HG-26

HG-27

HG-28

HG-29

HG-30

HG-31

HG-32

HG-33

HG-34

HG-35

HG-36

HG-37

HG-38

HG-39

HG-40

HG-41

HG-42

HG-43

HG-44

HG-45

HG-46

HG-47

HG-48

HG-49

HG-50

HG-51

HG-52

HG-53

HG-54

HG-55

HG-56

HG-57